

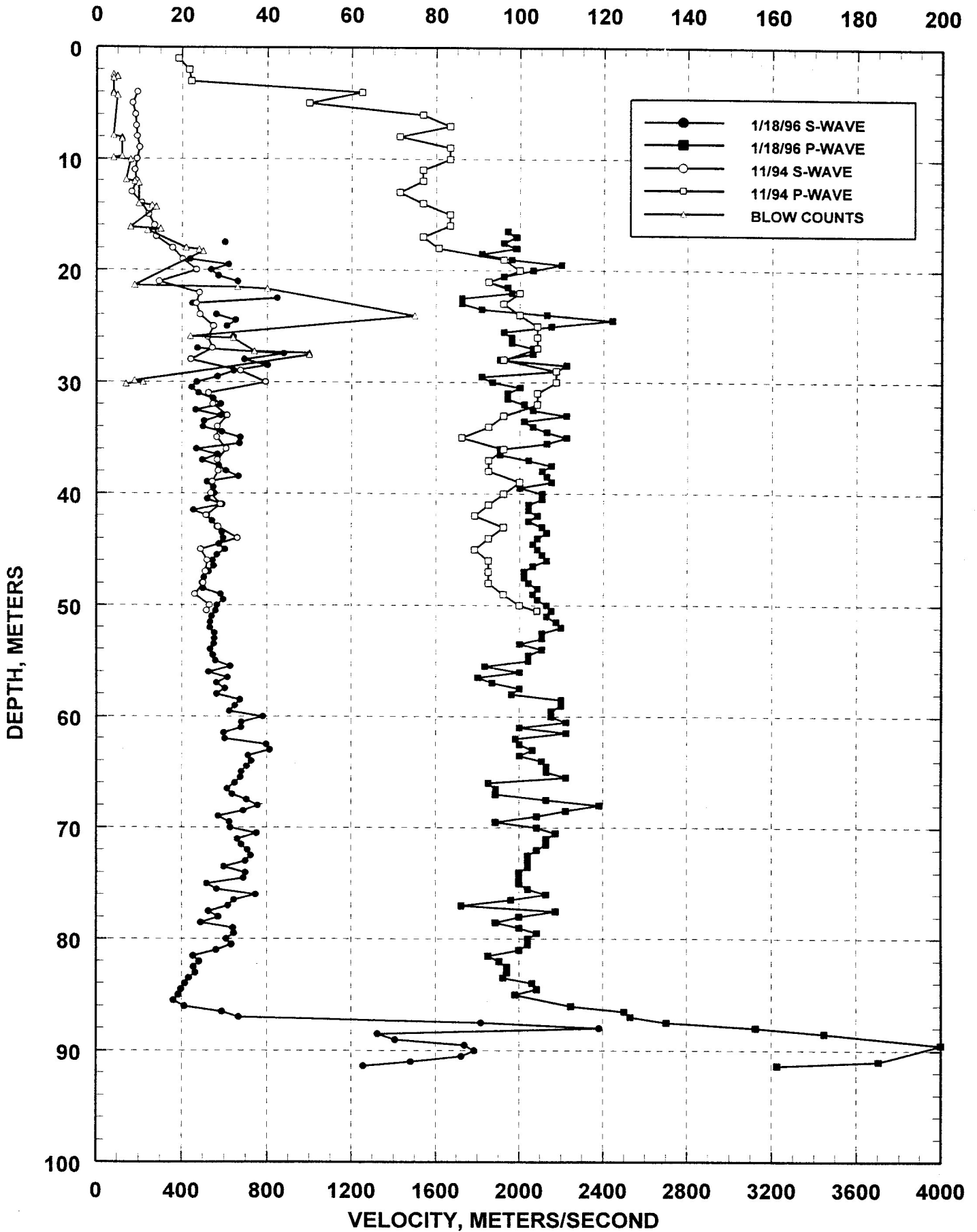
**NEW BOREHOLE GEOPHYSICAL RESULTS AT GVDA**

**ROBERT STELLER**

**MARCH 4, 1996**

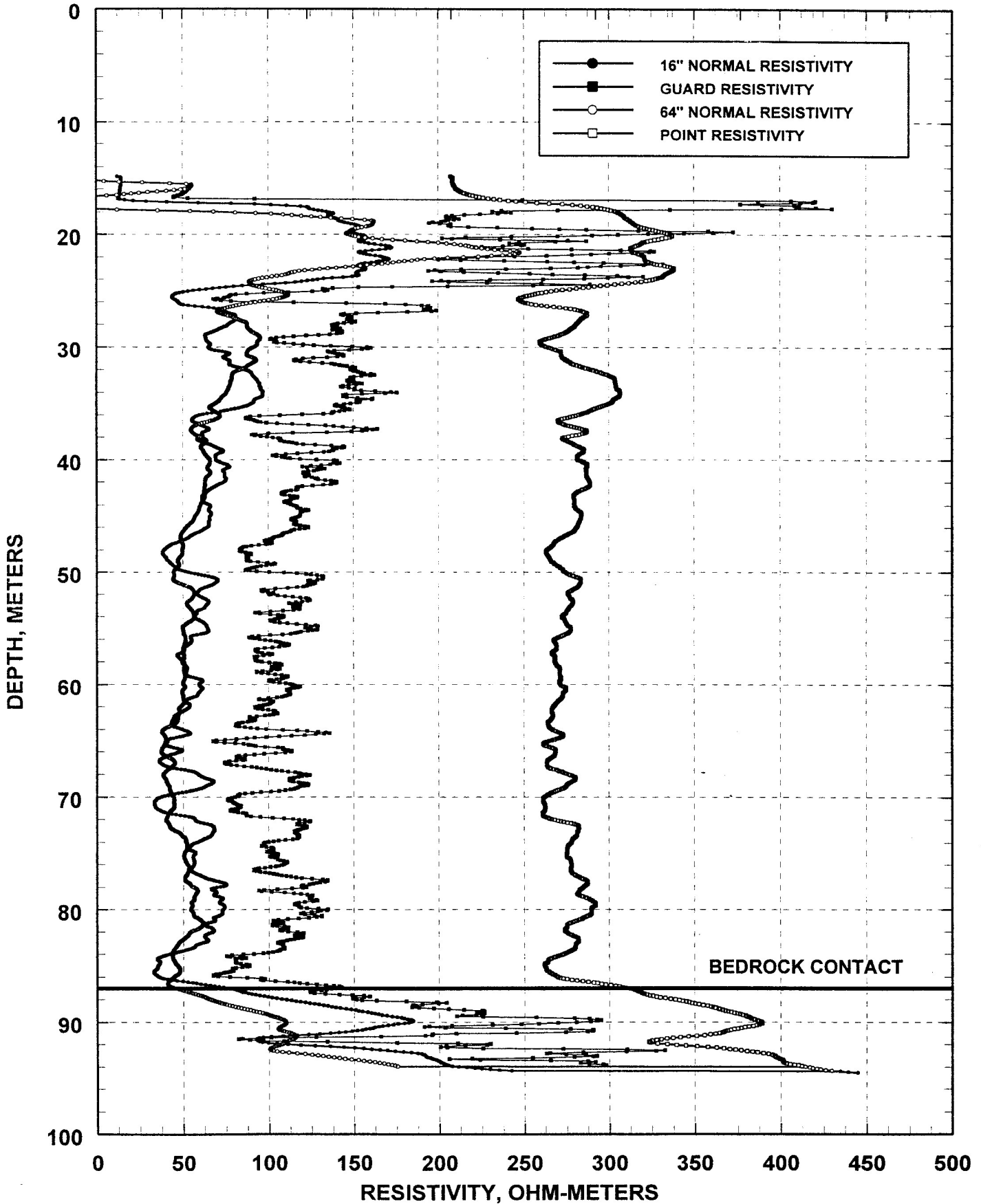
# GVDA BOREHOLE STUDIES 1/96

SPT BLOW COUNTS, PER 6 INCHES



# GVDA RESISTANCE LOGGING

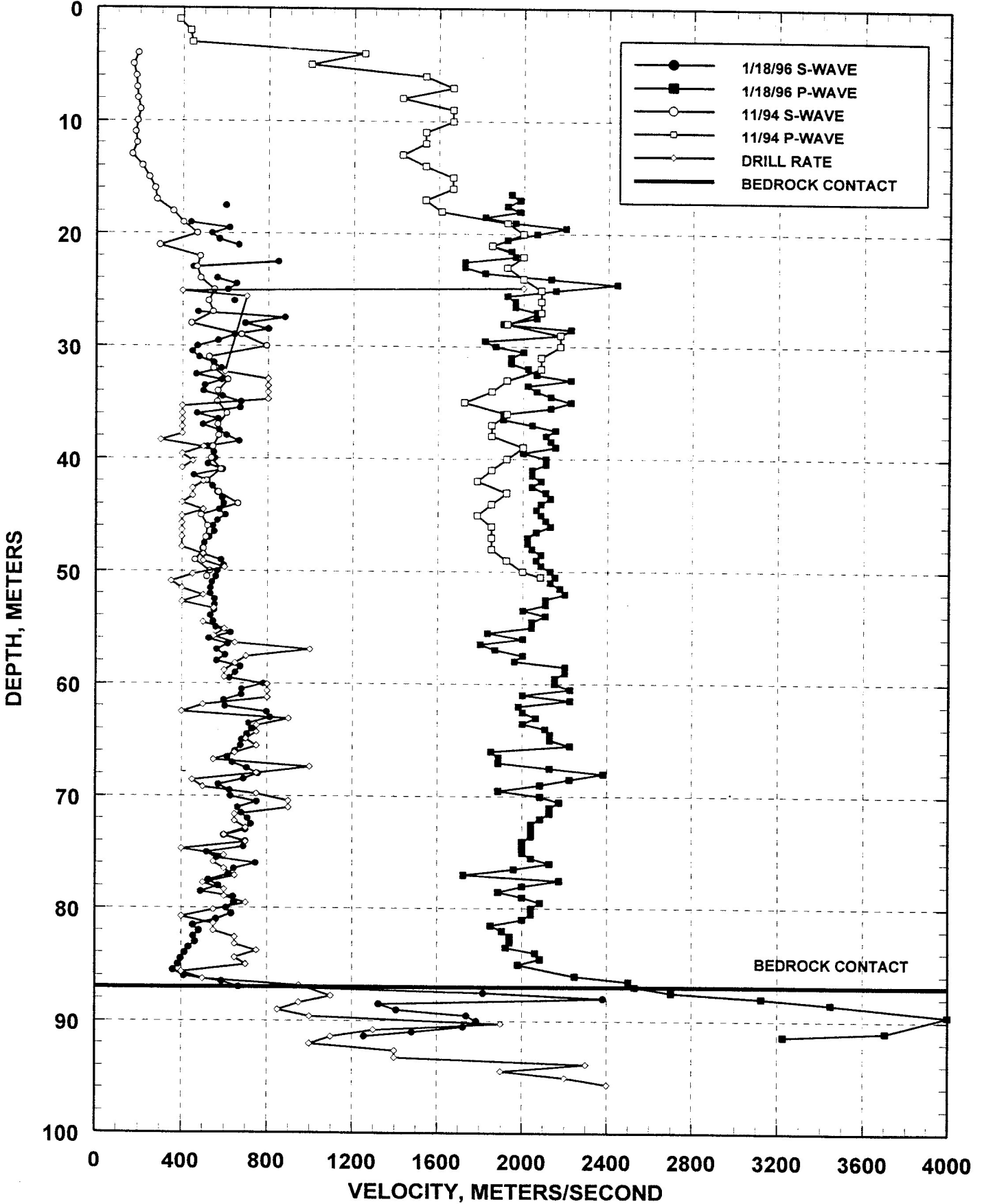
DATA COLLECTED 1/19/96



# GVDA BOREHOLE STUDIES 1/96

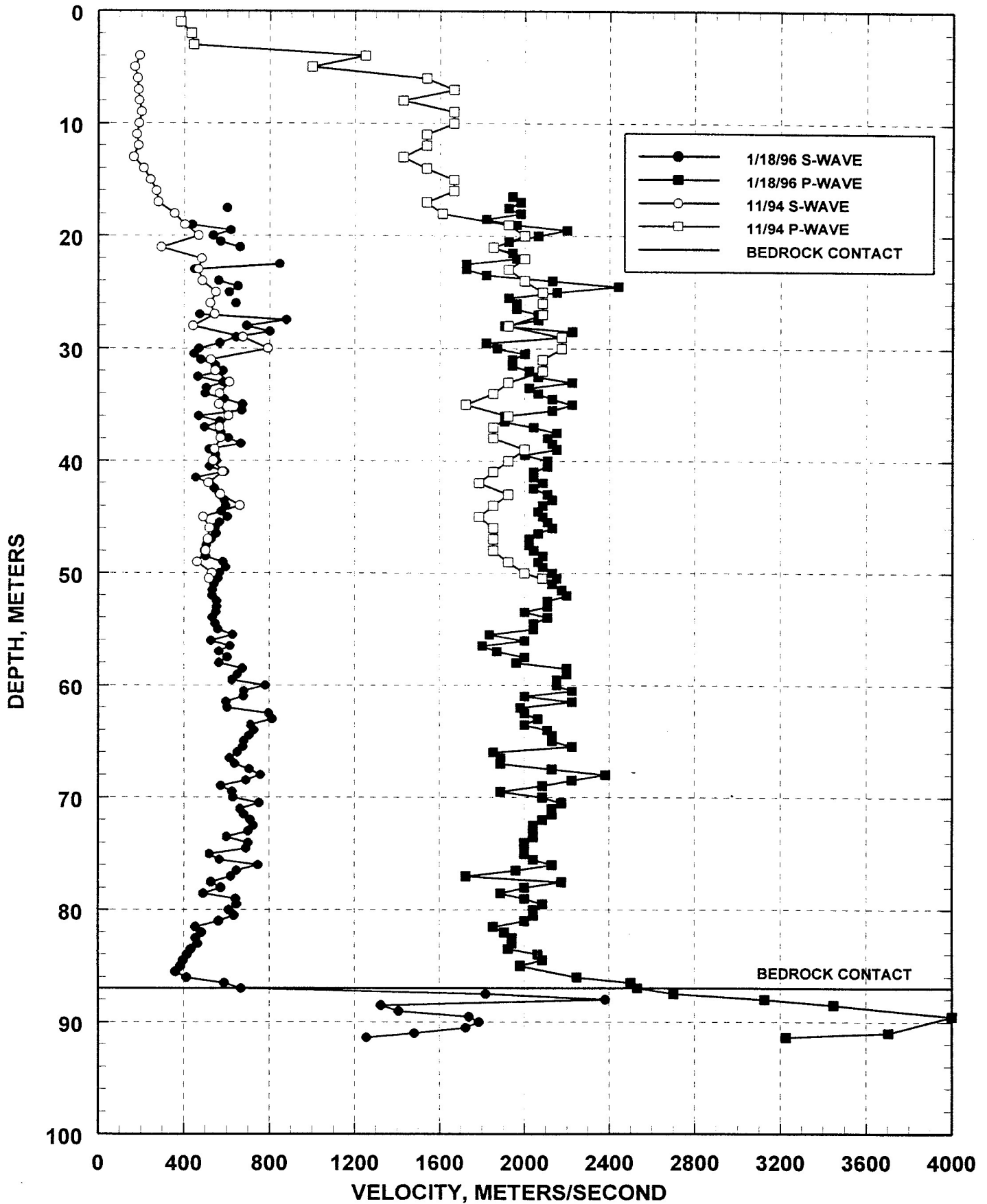
DRILL RATE, MIN/FT

0 1 2 3 4 5 6 7 8 9 10



# GVDA BOREHOLE STUDIES 1/96

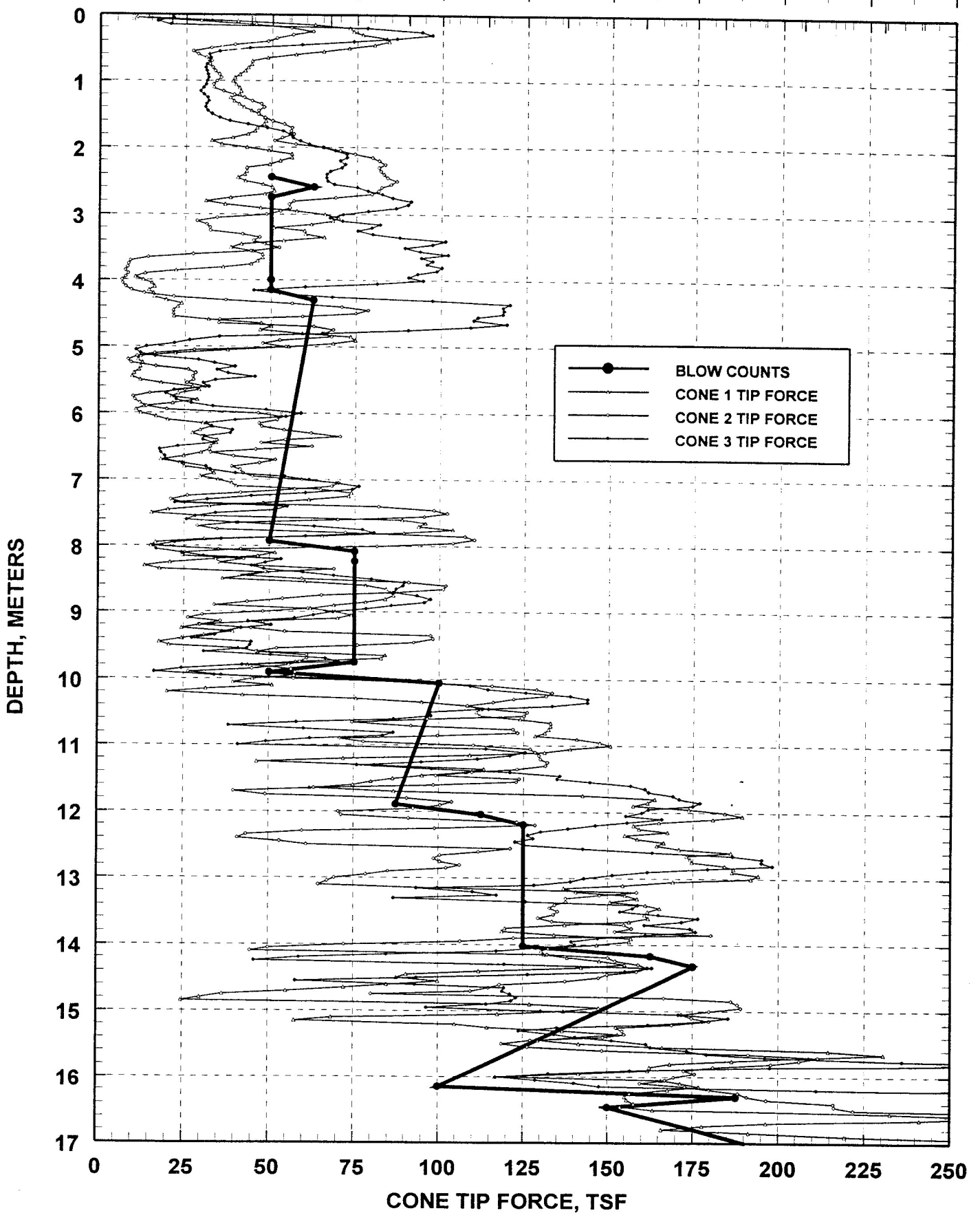
P- AND S-WAVE VELOCITIES, DATA COLLECTED 11/94 AND 1/18/96



# GVDA BOREHOLE STUDIES 1/96

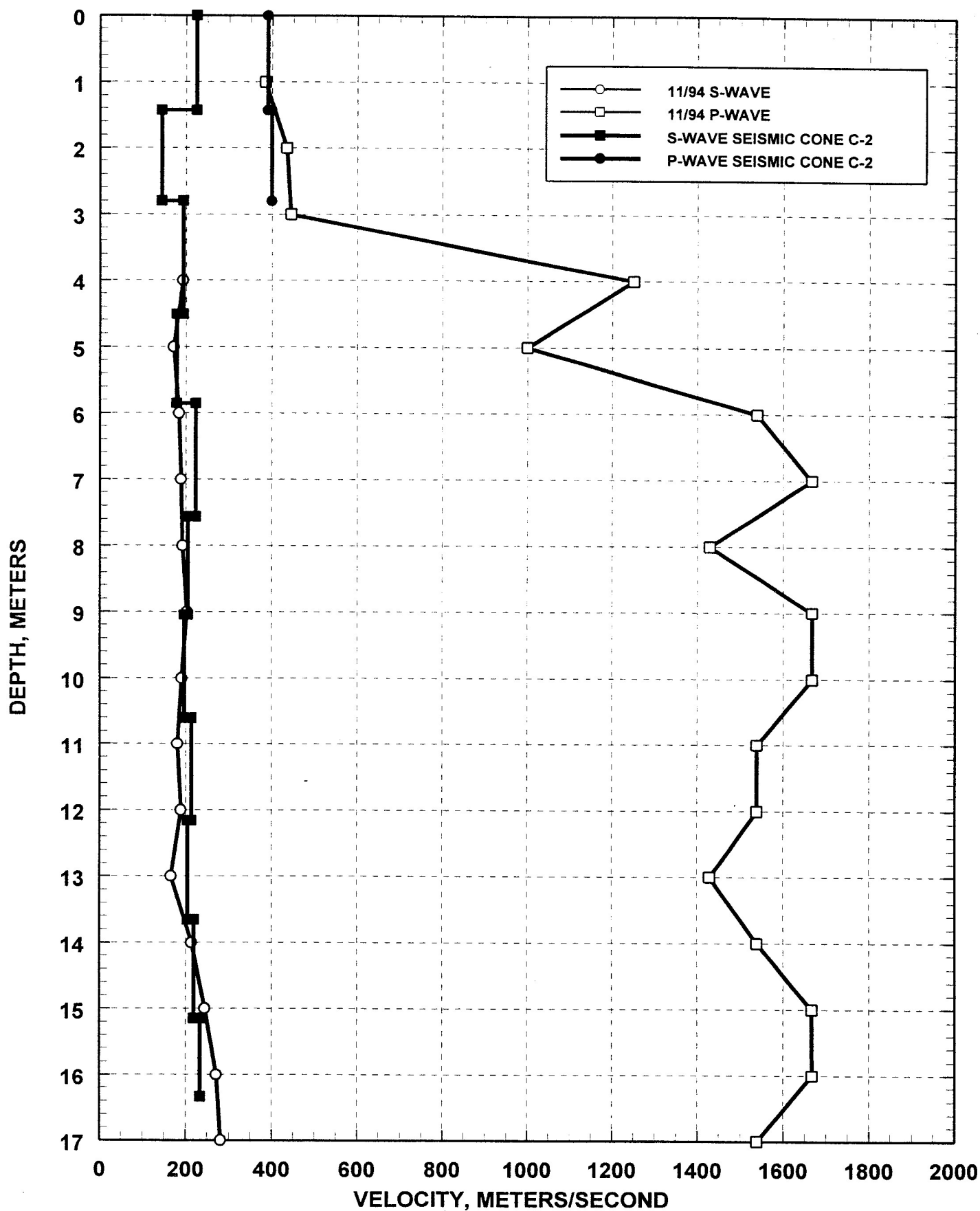
SPT BLOW COUNTS, PER 6 INCHES

0 2 4 6 8 10 12 14 16 18 20



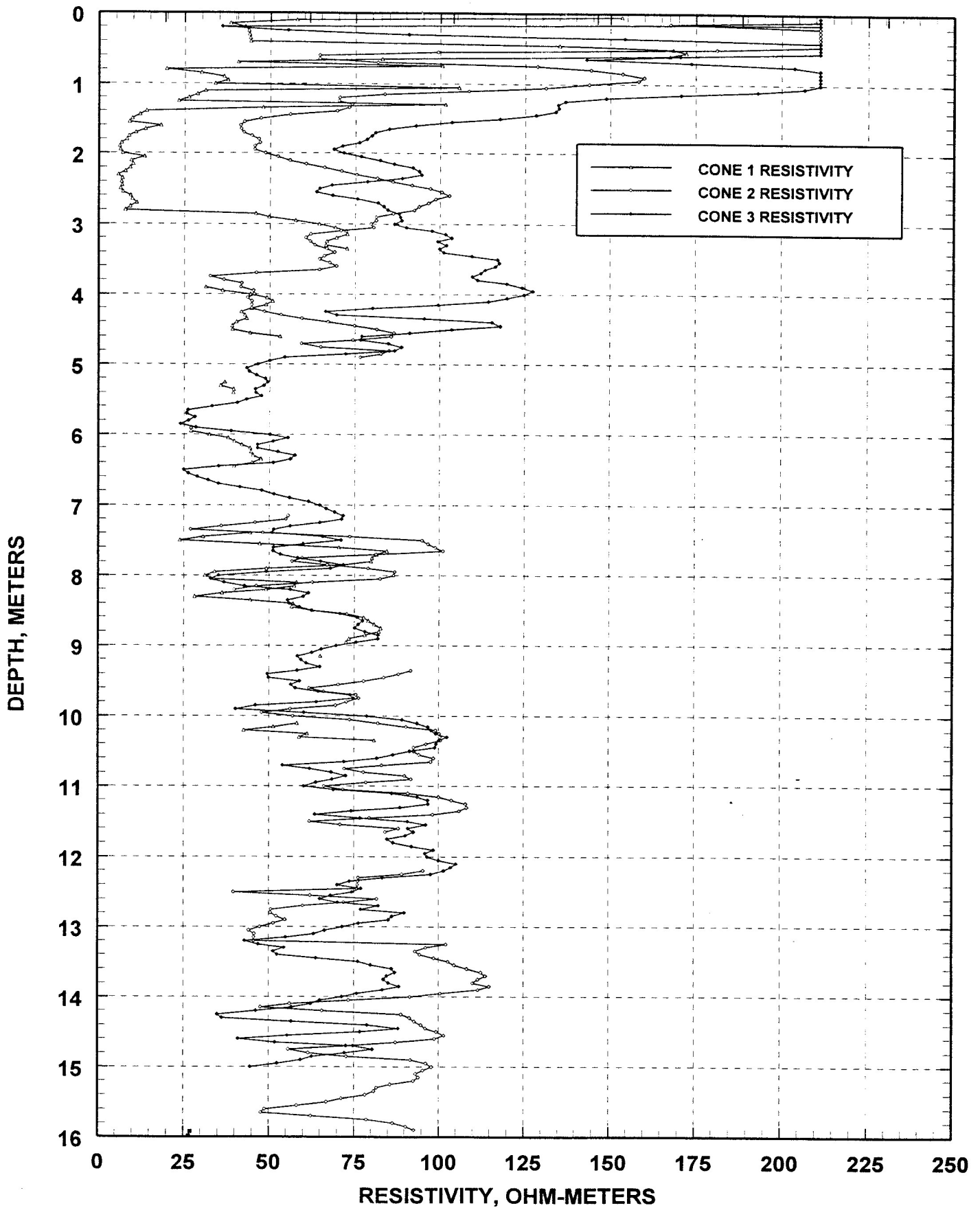
# GVDA BOREHOLE STUDIES 1/96

P- AND S-WAVE VELOCITIES, DATA COLLECTED 11/94 AND 1/18/96

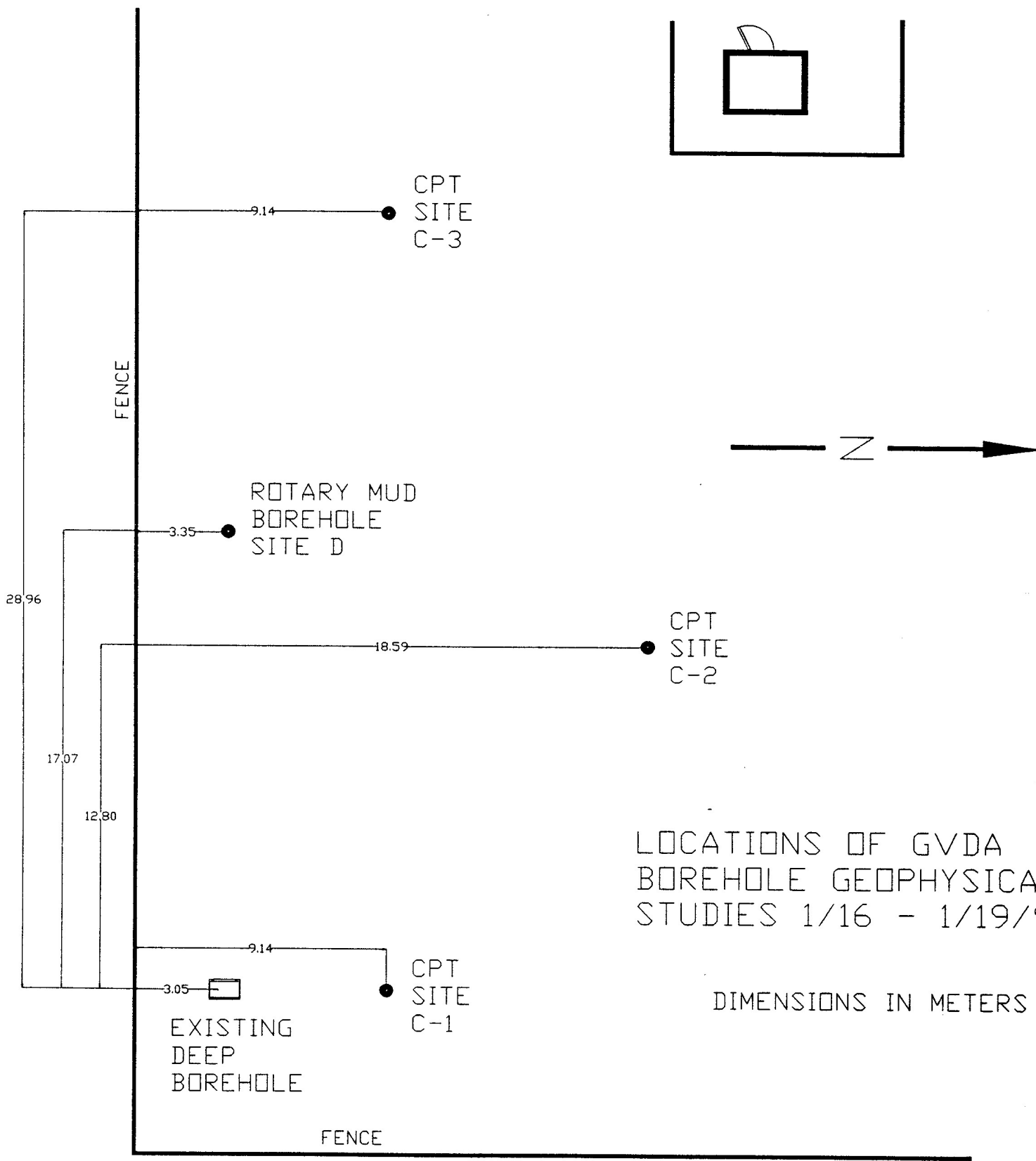


# GVDA RESISTANCE LOGGING

DATA COLLECTED 1/19/96



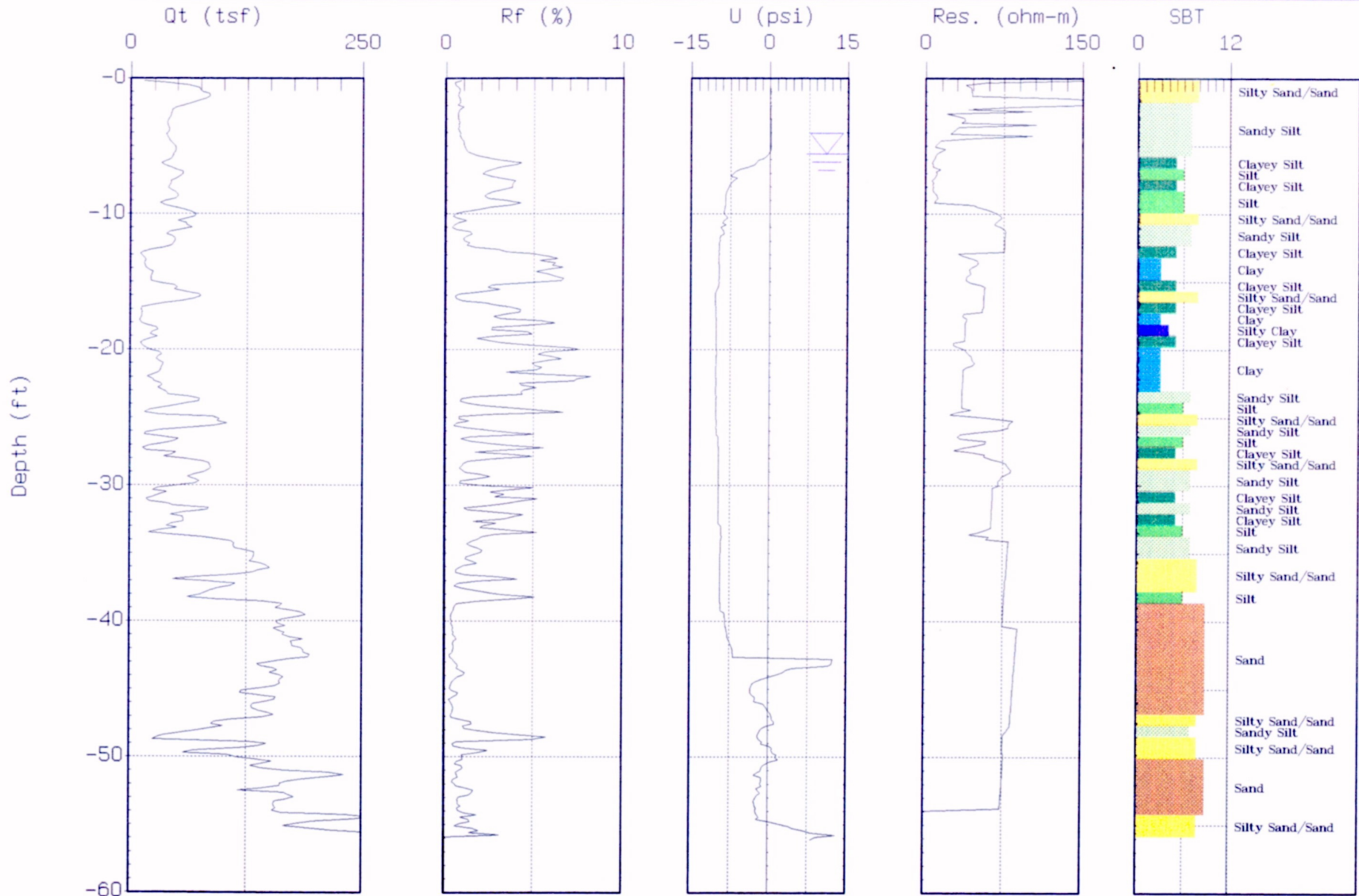




LOCATIONS OF GVDA  
 BOREHOLE GEOPHYSICAL  
 STUDIES 1/16 - 1/19/96

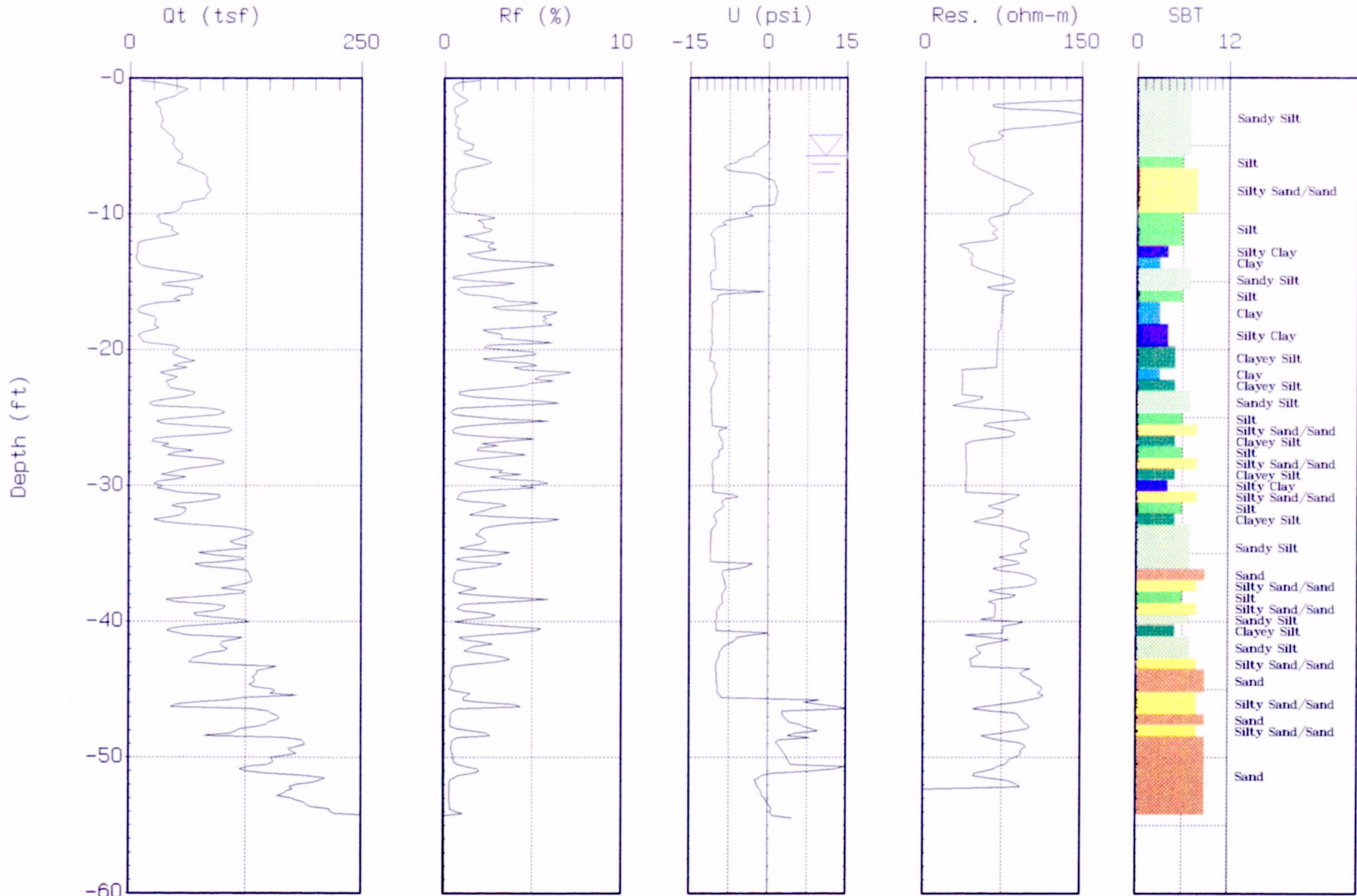
DIMENSIONS IN METERS

HIGHWAY 74



Max. Depth: 56.10 (ft)  
Depth Inc.: 0.164 (ft)

SBT: Soil Behavior Type (Robertson and Campanella 1988)  
☒ Estimated Phreatic Surface



Max. Depth: 54.46 (ft)

Depth Inc.: 0.164 (ft)

SBT: Soil Behavior Type (Robertson and Campanella 1988)

Estimated Phreatic Surface

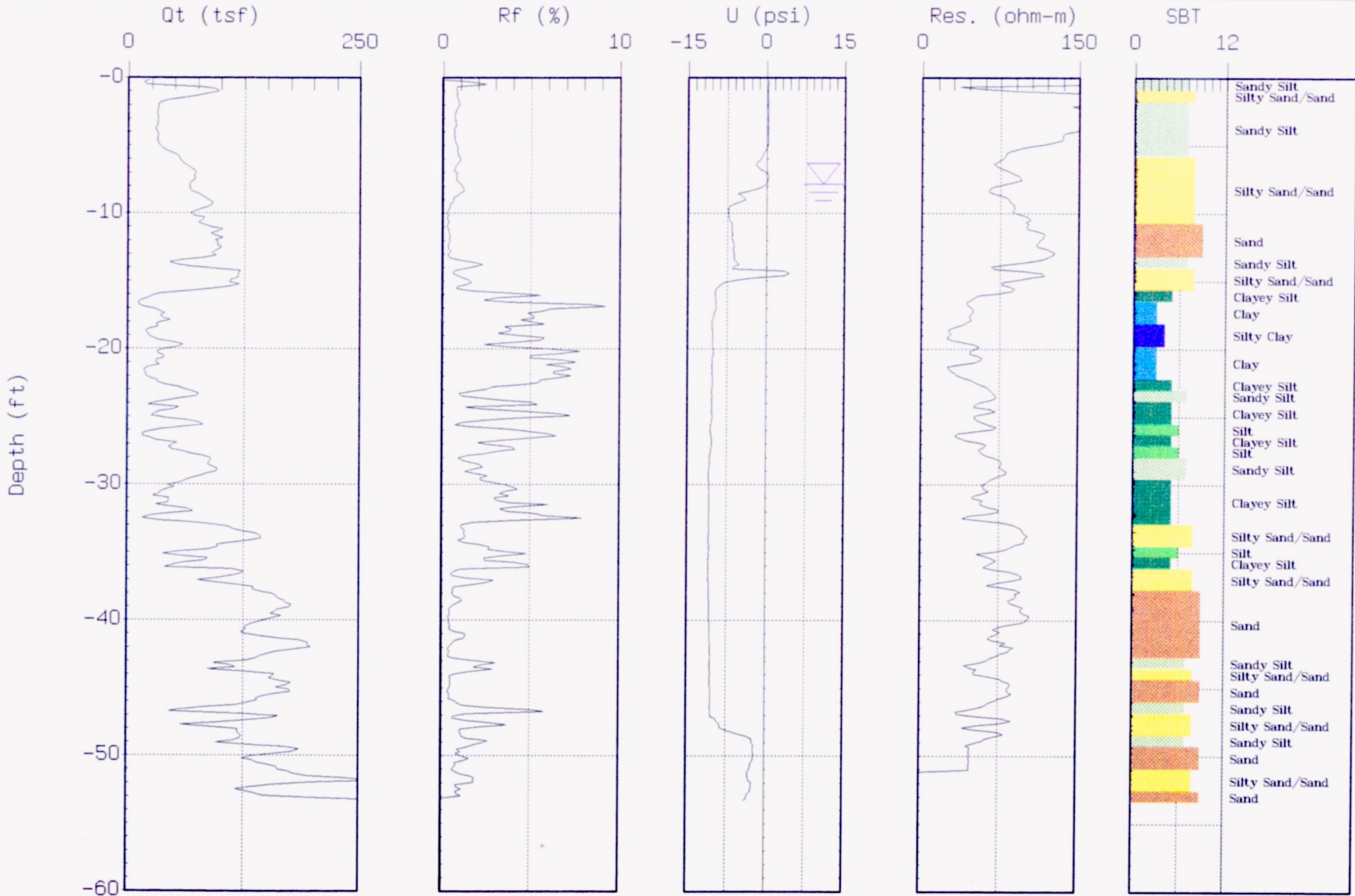
## **NEW BOREHOLE GEOPHYSICAL STUDIES AT GVDA**

### **ROTARY MUD BOREHOLE TO 95.7 M**

- **SPLIT SPOON SAMPLES FOR SOIL CLASSIFICATION, DENSITY, AND SPT BLOW COUNTS TO 30 M**
- **PITCHER AND SHELBY SAMPLES FOR CYCLIC TRIAXIAL TESTS**
- **DRILLING RATES 30 - 95.7 M**
- **SUSPENSION P-S VELOCITY TO 92 M**
- **GAMMA LOG 16 - 94 M**
- **GUARD AND POINT RESISTIVITY 16 - 94 M**
- **SP, SHORT AND LONG NORMAL RESISTIVITY 16 - 94 M**

### **CONE PENETROMETER AT 3 SITES TO 16.6 M**

- **CONE TIP FORCE**
- **RESISTIVITY**
- **SLEEVE FRICTION**
- **DYNAMIC PORE PRESSURE (PRESENTED VIA SOIL BEHAVIOR TYPE (SBT))**
- **SEISMIC CONE (DOWNHOLE SHEAR VELOCITY) AT SITE C-2**



Max. Depth: 53.31 (ft)  
Depth Inc.: 0.164 (ft)

SBT: Soil Behavior Type (Robertson and Campanella 1988)  
Estimated Phreatic Surface

**PITCHER AND SHELBY SAMPLES  
FOR CYCLIC TRIAXIAL TESTS**

<b>SAMPLE</b>	<b>DEPTH</b>	<b>LENGTH</b>
• P-1	3.1-3.8 M	0.81 M
• S-1	6.1-6.9 M	0.84 M
• P-4	20.1-20.6 M	0.36 M
• P-5	26.7-27.1 M	0.43 M
• S-2	30.5-31.1 M	0.51 M
• P-6	41.1-41.5 M	0.11 M













**AGBABIAN ASSOCIATES**  
engineers and consultants

**BORING LOG D**

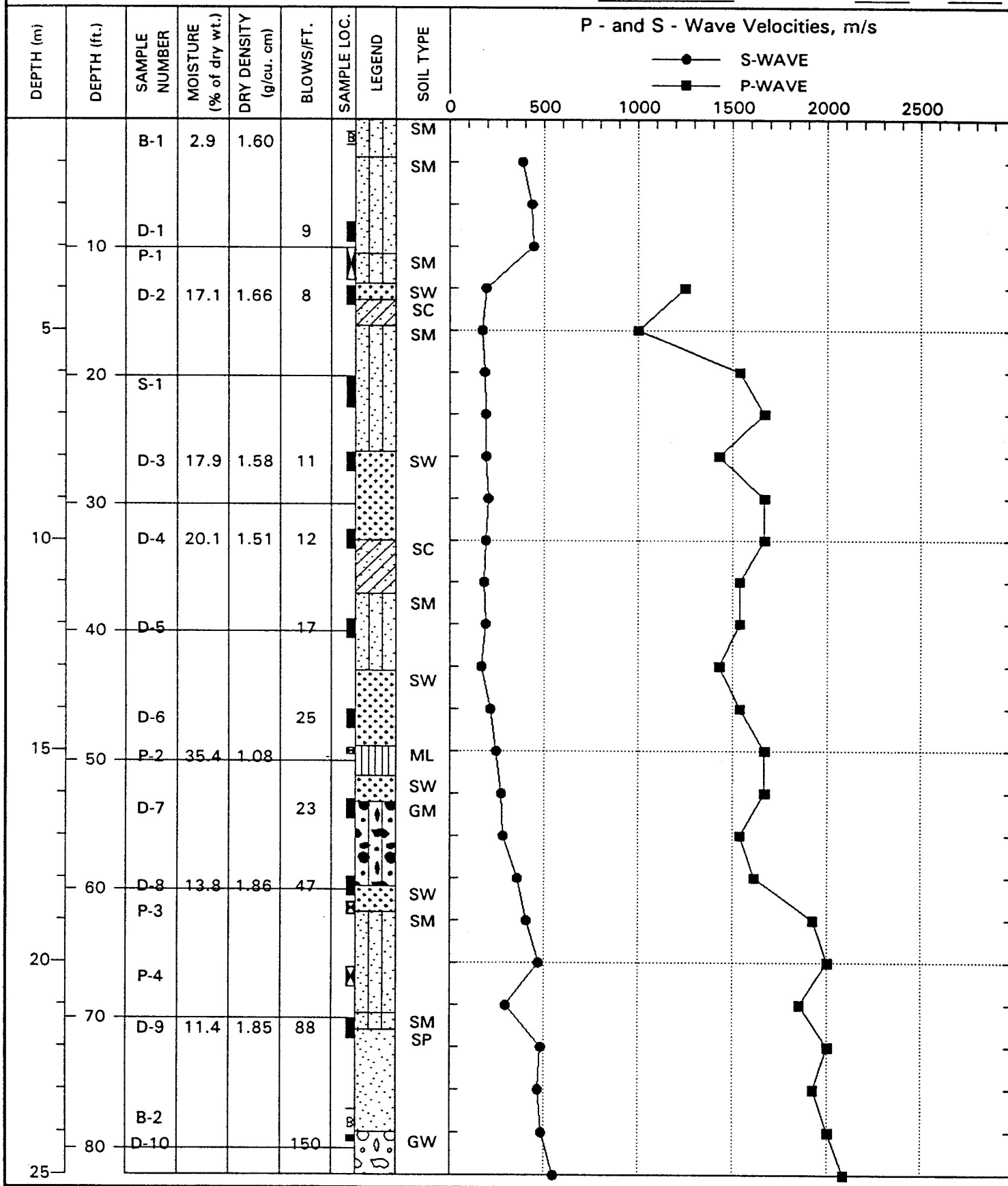
Site: GARNER VALLEY

Borehole: 95.70 m

Date: 1/19/96

Job: 96203

Sheet 1 of 4





**AGBABIAN ASSOCIATES**  
engineers and consultants

**BORING LOG D**

Site: GARNER VALLEY

Borehole: 95.70 m

Date: 1/19/96

Job: 96203

Sheet 2 of 4

